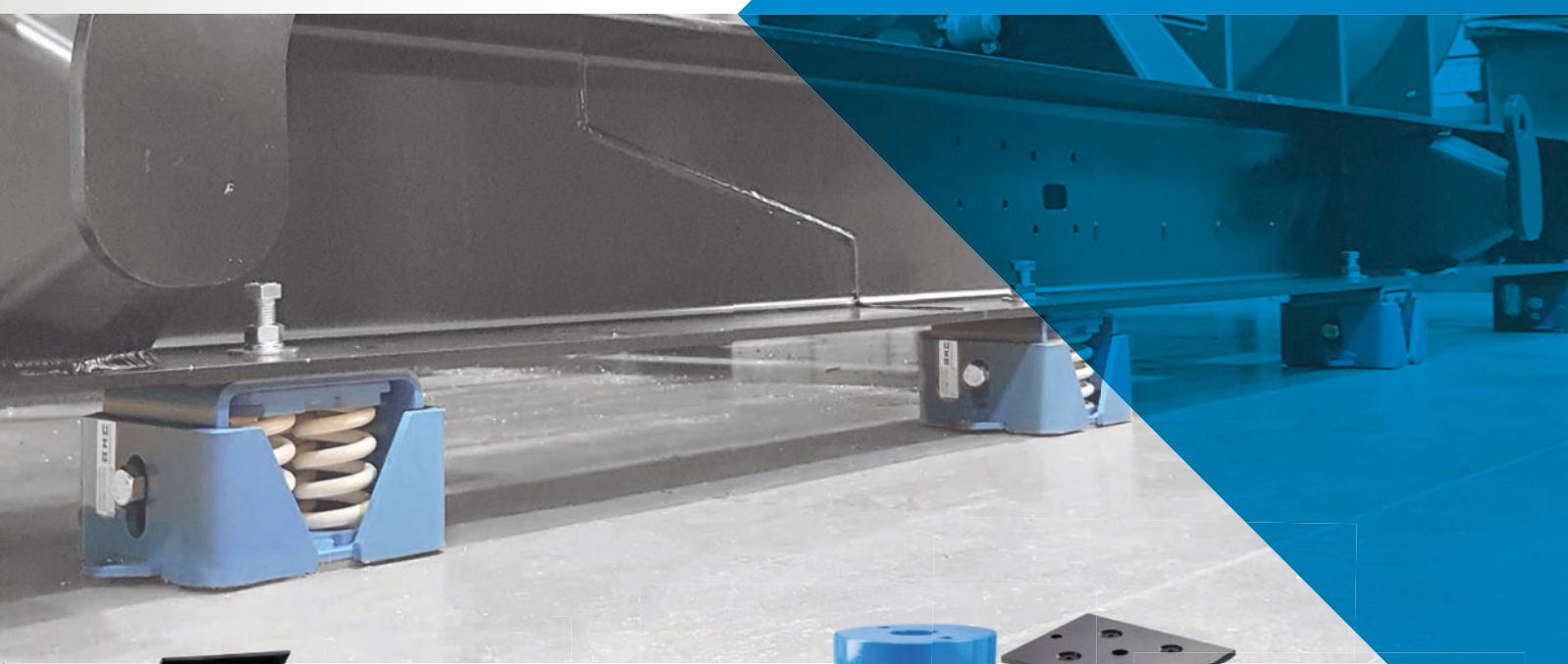


NOISE AND VIBRATION SOLUTIONS FOR HVAC



 VIBRATION ISOLATOR PRO ACCELEROMETER



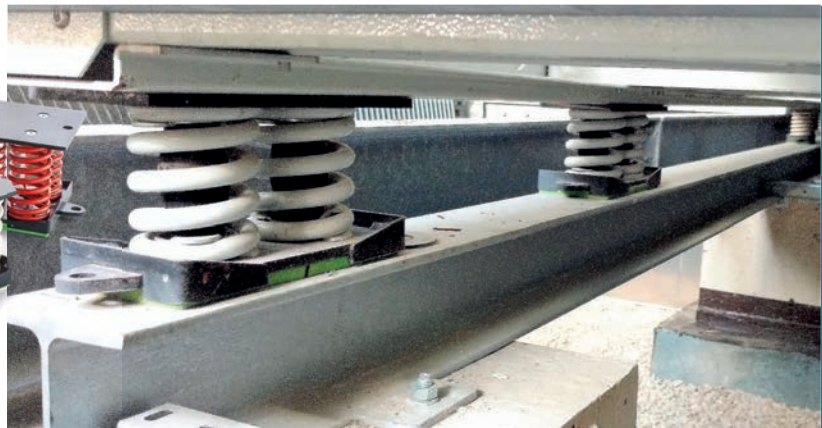
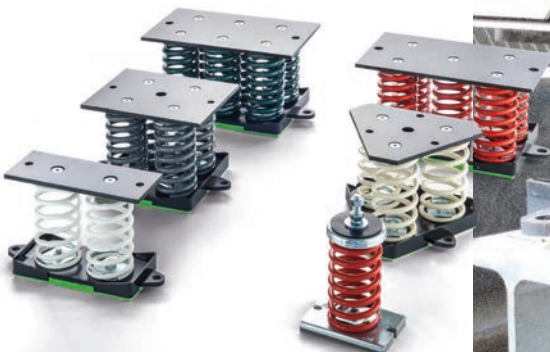
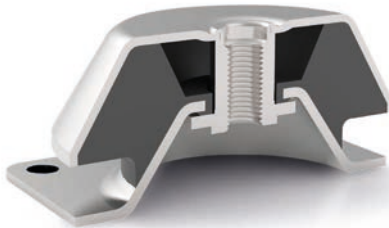

MECANOCAUCHO

Technology

Innovation

Quality

Engineering



Calculation

Technical support

Logistics

Stock



AMC MECANOCAUCHO® PROCESS



All machinery, which by virtue of its design has reciprocating or rotating parts, creates vibration to some degree through the imbalance of the moving parts.

This vibration produced by a machine leads to different problems such as a reduction in the machine's useful life through part wear plus the transmission of this vibration to other non-insulated adjacent structures, giving rise to problems of noise and vibration transmission. In this sense, **AMC MECANOCAUCHO®** has been developing for over 50 years different ranges of anti-vibration mounts that can solve problems like the ones described above.

Taking into account some data of the machine such as weight, mount positions, type of machine, Center of Gravity, frequency of excitation, etc., **AMC MECANOCAUCHO®** does vibration calculations in order to suggest the most appropriate anti-vibration mount solution for each case. The proposed solutions are commonly taken using following types of anti-vibration mounts: **AMC BRB**, **AMC BSB** and **AMC DRD** mounts (Rubber-Metal solution), **AMC Vibrabsorber mounts** (spring mounts solution), **Sylomer®** and **FZ+Sylomer®** mounts.

QUALITY COMMITMENT

AMC-MECANOCAUCHO® is a ISO 9001 certified company by DET NOR-SKE VERITAS DNV. **AMC-MECANOCAUCHO®** is officially approved by NATO under the id number **NCAGE 0230B**- compliant supplier.

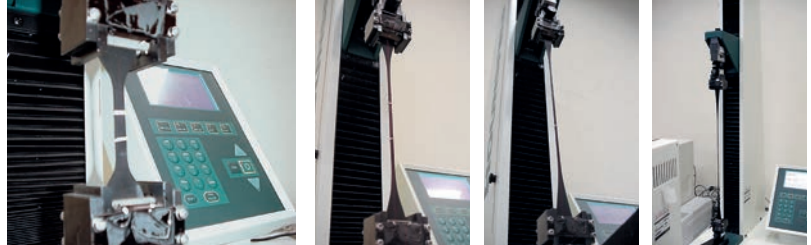
Rubber curing properties are controlled by **Rheometrical** instruments as well as extensometers, dynamometers and durometers.

Elastical properties are measured with several axial and radial dynamometers as well as with a servohydraulic dynamic test bench from **Instron-Schenck®**.

Adhesion test



Extensometer



Rheometer



ISO 9001:2014



ISO 14001: 2014



Marine type approval

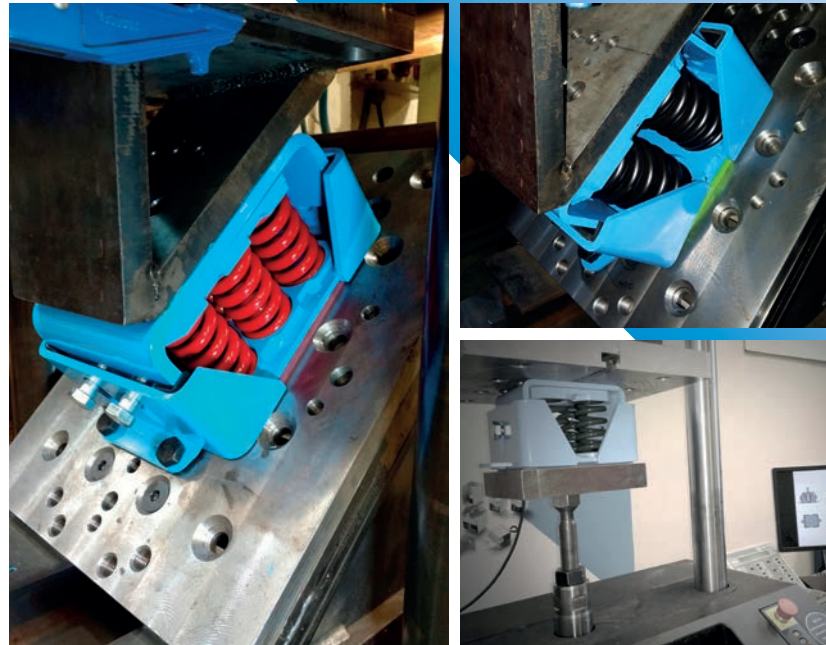


NATO certificate

FATIGUE AND ENDURANCE TESTS

AMC MECANOCAUCHO®

continuous development of new products demonstrates its support in R&D. Our laboratory is equipped with the most advanced Dynamic testing equipment.

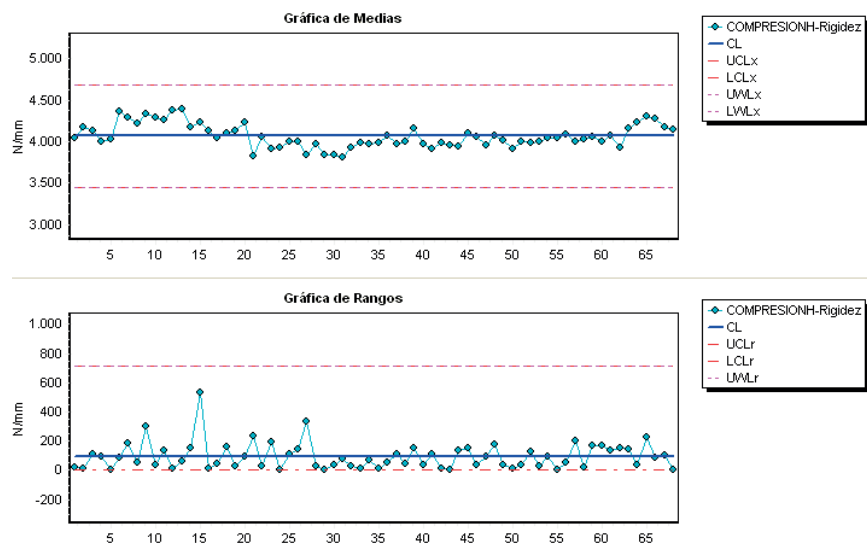


PROCESS CONTROL

AMC-MECANOCAUCHO®

realizes a process control of the mountings made manufactured. The % of sampling is according to customer requirement.

On the graph below, stiffness values of a mount is shown while production is taking place.



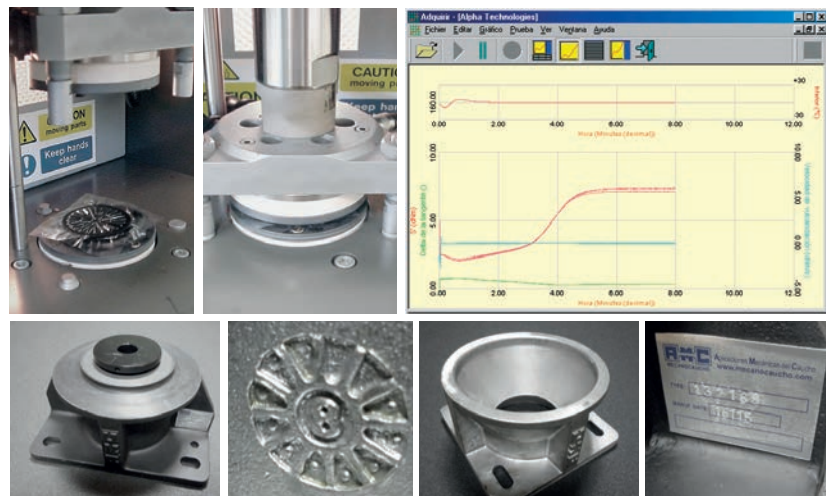
TRACEABILITY

AMC-MECANOCAUCHO® can keep track of the finished goods for those customers that require traceability on their products.

Rheometrical tests are linked to each batch of production. This allows to verify the vulcanization properties of the rubber mix used.

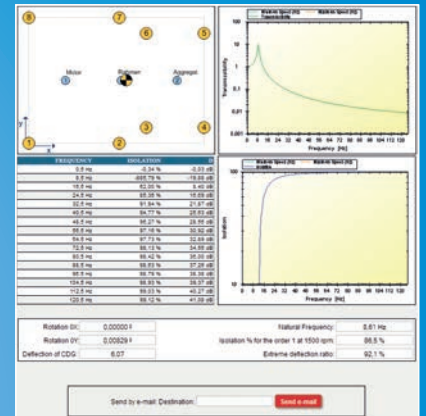
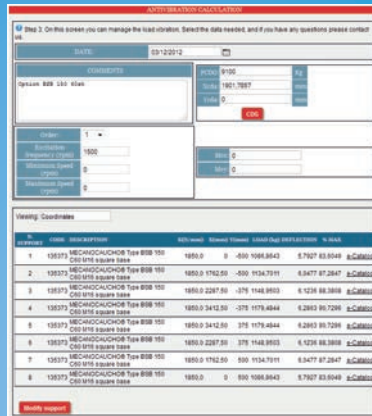
Foundry castings can incorporate the date of manufacturing.

Finished goods can incorporate a **serial number**. This allows us to check stiffness values of the mounts as well as other complementary information.

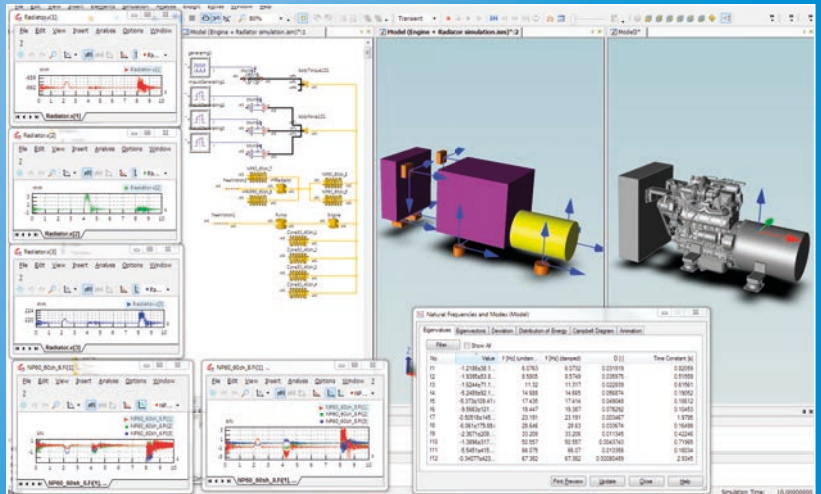


1. Calculation

AMC MECANOCAUCHO® calculates anti-vibration solutions by taking into account data such as weight, mount positions, type of machine, center of gravity, frequency of excitation, etc...



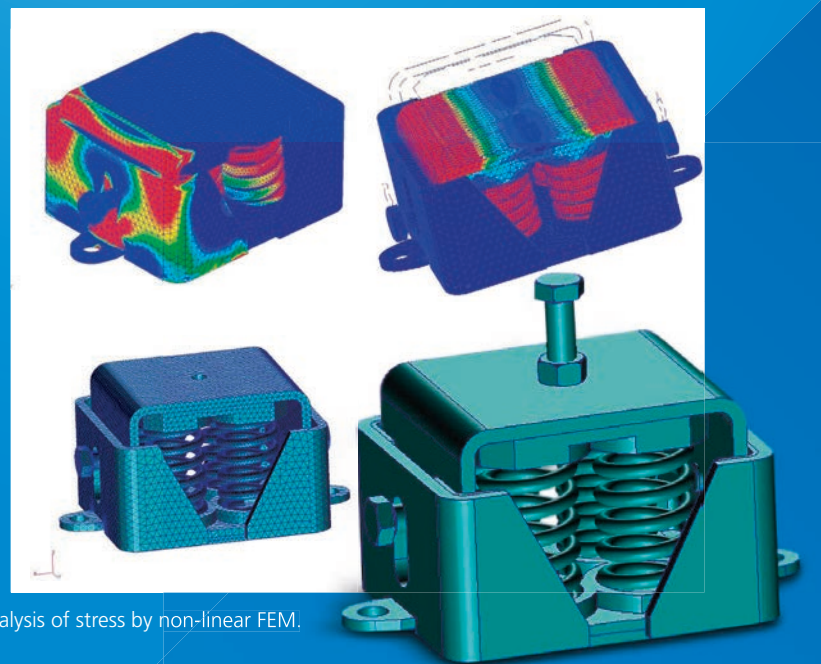
One degree of freedom calculation



Anti-vibration calculation with more than one degree of freedom.

2. Design

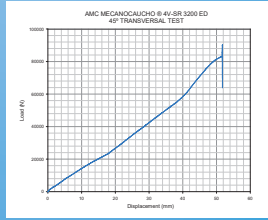
After studying client specific needs for the application and the isolation performance required, AMC MECANOCAUCHO® can produce a new design if standard products are not suitable.



Analysis of stress by non-linear FEM.

Modelling of products in 3D.

3. Test and dynamic characterisation

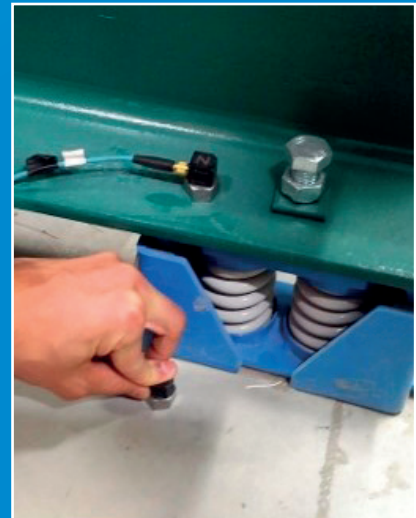


AMC MECANOCAUCHO® can offer customers a wealth of experience and know-how in measuring noise and vibration to effect optimum solutions to those problems.

4. Measurements

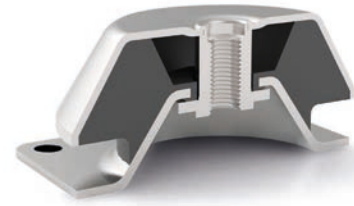


AMC MECANOCAUCHO® provides its customers with all its experience and know-how in measuring vibrations and noise in the field so as to reduce machine-produced emissions of noise and vibrations.



AMC MECANOCAUCHO® RANGE OF PRODUCTS FOR HVAC EQUIPMENT

These mounts work the rubber in shear and compression. Thanks to their section that produce large deflections, these BRB, BSB and DRD mounts achieve low natural frequencies and excellent vibration isolation values.



BRB



Natural frequency: 5-11 Hz

TYPE	AMC	Hardness 40 sh	Hardness 50 sh	Hardness 60 sh	Hardness 70 sh
BRB 45	Max. Load (Kg.)	12	18	25	-
BRB 50	Max. Load (Kg.)	20	40	50	80
BRB 60	Max. Load (Kg.)	30	45	65	75
BRB 65 M10	Max. Load (Kg.)	50	75	120	140
BRB 65 M12	Max. Load (Kg.)	50	75	120	140
BRB 70	Max. Load (Kg.)	50	75	120	140
BRB 80 M10	Max. Load (Kg.)	80	130	175	235
BRB 80 M12	Max. Load (Kg.)	80	130	175	235
BRB 95 M10	Max. Load (Kg.)	150	260	330	390
BRB 95 M12	Max. Load (Kg.)	150	260	330	390
BRB 100 M12	Max. Load (Kg.)	200	305	420	450
BRB 100 M16	Max. Load (Kg.)	200	305	420	450
BRB 110 M12	Max. Load (Kg.)	200	305	420	450
BRB 110 M16	Max. Load (Kg.)	200	305	420	450
BRB 125	Max. Load (Kg.)	310	450	700	900
BRB 150	Max. Load (Kg.)	450	570	800	1000
BRB 180	Max. Load (Kg.)	875	1110	1700	2630
BRB 220	Max. Load (Kg.)	1600	2400	3400	4200

BSB



Natural frequency: 5-11 Hz

TYPE	AMC	Hardness 40 Sh	Hardness 50 Sh	Hardness 60 Sh	Hardness 70 Sh
BSB 60	Max. Load (Kg)	70	130	170	245
BSB 80 M10	Max. Load (Kg)	110	161	231	300
BSB 80 M12	Max. Load (Kg)	110	161	231	300
BSB 95 M10	Max. Load (Kg)	180	230	270	330
BSB 95 M12	Max. Load (Kg)	180	230	270	330
BSB 110 M12	Max. Load (Kg)	250	350	450	550
BSB 110 M16	Max. Load (Kg)	250	350	450	550
BSB 125	Max. Load (Kg)	450	550	690	900
BSB 150	Max. Load (Kg)	750	950	1300	1650
BSB 160	Max. Load (Kg)	900	1200	1600	2300
BSB 180	Max. Load (Kg)	1300	1750	2100	2900
BSB 220	Max. Load (Kg)	2500	3200	4000	5000

DRD



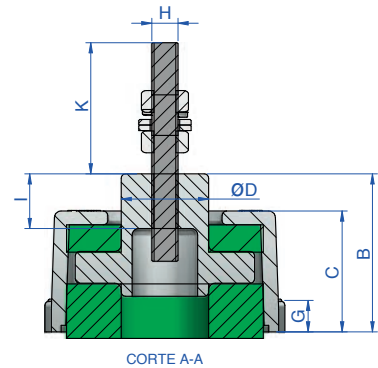
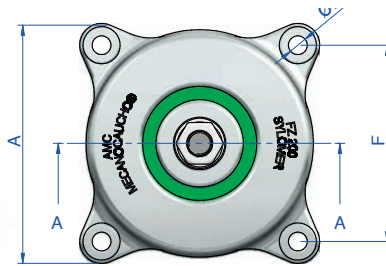
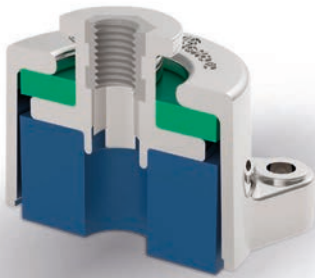
Natural frequency: 5-11 Hz

TYPE	AMC	Hardness 45 Sh	Hardness 60 Sh	Hardness 75 Sh	Weight (gr.)
DRD 45	Max. Load (Kg.)	20	50	-	70
DRD 65	Max. Load (Kg.)	40	75	-	170
DRD 85	Max. Load (Kg.)	75	120	185	303
DRD 90	Max. Load (Kg.)	130	220	275	430
DRD 130	Max. Load (Kg.)	280	500	625	1080
DRD 170	Max. Load (Kg.)	380	750	930	2390
DRD 250	Max. Load (Kg.)	1400	2500	3150	10400

FZ sylomer[®] by getzner MOUNTS

The AMC-MECANOCAUCHO[®] FZ mounts are composed by two metal parts surrounded by a high resiliency Sylomer[®] poliurethane compound that offers a high isolation capacity with a small static deformation in all MEDIUM-HIGH frequency range.

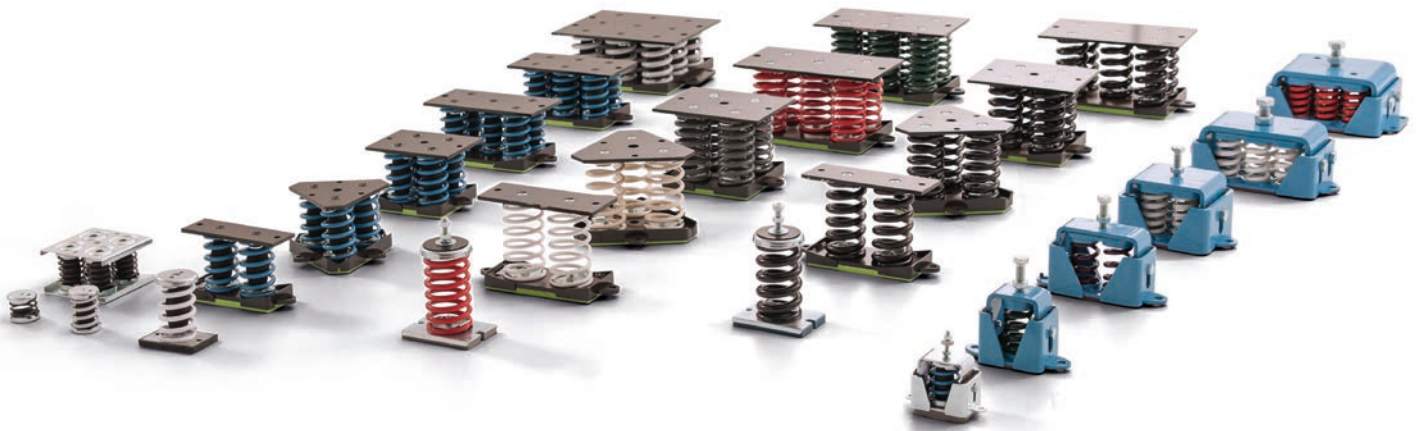
They have also an interlocking metal component that provides a fail-safe protection. The Sylomer[®] polyurethane compound is oil resistant and the temperature range of the FZ mounts is -30°C +70°C.



Natural frequency: 7-14 Hz

Type	A (mm.)	B (mm.)	C (mm.)	D (mm.)	E (mm.)	F (mm.)	G (mm.)	H (mm.)	I (mm.)	K (mm.)	Load (kg.)	Weight (gr.)	Code
FZ-50-27-M10 + KIT NIV	67	46.5	39	28	6.5	52	13	10	26	60	15	311	176293
FZ-50-33-M10 + KIT NIV	67	46.5	39	28	6.5	52	13	10	26	60	25	311	176295
FZ-50-39-M10 + KIT NIV	67	46.5	39	28	6.5	52	13	10	26	60	45	311	176297
FZ-50-45-M10 + KIT NIV	67	46.5	39	28	6.5	52	13	10	26	60	50	311	176281
FZ-50-51-M10 + KIT NIV	67	46.5	39	28	6.5	52	13	10	26	60	50-100	311	176291
FZ-100-45-M12 + KIT NIV	80	56	48	25	6.5	67	13	12	40	60	100-150	464	176299
FZ-100-51-M12 + KIT NIV.	80	56	48	25	6.5	67	13	12	40	60	150-200	464	176301
FZ-200-51-M12 + KIT NIV.	108	72	55	40	8.5	90	15	12	25	60	170-280	978	176311
FZ-200-57-M12 + KIT NIV.	108	72	55	40	8.5	90	15	12	25	60	280-400	978	176321
FZ-200-57-M14 + KIT NIV.	108	72	55	40	8.5	90	15	14	25	60	280-400	978	176323
FZ-400-51-M14 + KIT NIV.	155	95	80	65	12.5	125	22	14	28	60	460-800	2461	176331
FZ-400-57-M16 + KIT NIV.	155	95	80	65	12.5	125	22	16	28	60	800-1000	2461	176341
FZ-600-51-M18 + KIT NIV.	175	95	80	65	14	140	23	18	28	60	1000-1200	3077	176351
FZ-600-57-M20 + KIT NIV.	175	95	80	65	14	140	23	20	28	60	1200-1500	3077	176361
FZ-1000-57-M20 + KIT NIV.	205	95	80	65	16	162	28	20	28	60	1500-2000	3751	176371
FZ-50-27-M10	67	46.5	39	28	6.5	52	13	10	26	-	15	260	176294
FZ-50-33-M10	67	46.5	39	28	6.5	52	13	10	26	-	25	260	176296
FZ-50-39-M10	67	46.5	39	28	6.5	52	13	10	26	-	45	260	176298
FZ-50-45-M10	67	46.5	39	28	6.5	52	13	10	26	-	50	260	176282
FZ-50-51-M10	67	46.5	39	28	6.5	52	13	10	26	-	50-100	260	176292
FZ-100-45-M12	80	56	48	25	6.5	67	13	12	40	-	100-150	380	176300
FZ-100-51-M12	80	56	48	25	6.5	67	13	12	40	-	150-200	380	176302
FZ-200-51-M12	108	72	55	40	8.5	90	15	12	25	-	170-280	868	176312
FZ-200-57-M12	108	72	55	40	8.5	90	15	12	25	-	280-400	868	176322
FZ-200-57-M14	108	72	55	40	8.5	90	15	14	25	-	280-400	868	176324
FZ-400-51-M14	155	95	80	65	12.5	125	22	14	28	-	460-800	2253	176332
FZ-400-57-M16	155	95	80	65	12.5	125	22	16	28	-	800-1000	2253	176342
FZ-600-51-M18	175	95	80	65	14	140	23	18	28	-	1000-1200	2756	176352
FZ-600-57-M20	175	95	80	65	14	140	23	20	28	-	1200-1500	2756	176362
FZ-1000-57-M20	205	95	80	65	16	162	28	20	28	-	1500-2000	3348	176372

VIBRABSORBER + **sylomer**[®] by getzner



The main characteristic of these mounts is their own capacity to isolate very low disturbing frequencies. A wide range of loads are covered with these AMC, VSR and VSH spring mounts. Anti-seismic spring mounts are also available for seismic applications.

A Sylomer[®] microcellular polyurethane pad can be also included under the base plate of all the VIBRABSORBER range improving

the isolation, mainly at mid-high vibration frequencies that could be transmitted by the spring coil.

APPLICATIONS

Specially interesting for rotating machinery in buildings like air-conditioning, fans, ventilators, compressors, pumps, generators sets, etc.



AMC
Max.Deflection: 25mm.
Nat. Frequency: 4Hz

VSR
Max.Deflection: 30mm.
Nat. Frequency: 3Hz

VSH
Max.Deflection: 50mm.
Nat. Frequency: 2Hz



ANTI-SEISMIC SUPPORTS AMC
Max.Deflection: 22mm.
Nat. Frequency: 4Hz

ANTI-SEISMIC SUPPORTS VSR
Max.Deflection: 30mm.
Nat. Frequency: 3Hz

ANTI-SEISMIC SUPPORTS VSH
Max.Deflection: 50mm.
Nat. Frequency: 2Hz

VIBRABSORBER + ^{by getzner} **sylomer**[®] HANGERS SOLUTIONS

SRB & SRS



These Spring type mounts are thought for ducts and air conditioning units that are set to ceilings.

They have the same characteristics as the VIBRABSORBER spring range of mounts, isolating very low disturbing frequencies.

Natural frequency: 3-5 Hz

TYPE	Max.Load (Kg.)
SRB 25	25
SRB 50	50
SRB 75	75
SRB 100	100
SRS 25 + Sylomer®	25
SRS 50 + Sylomer®	50
SRS 75 + Sylomer®	75
SRS 100 + Sylomer®	100
SRS 125 + Sylomer®	125
SRS 150 + Sylomer®	150

VT & VT-HD



Natural frequency: 3 - 5 Hz

Natural frequency: 2 - 5 Hz

TYPE	Max.Load (Kg.)
VT 15	15
VT 25	25
VT 50	50
VT 75	75
VT 100	100
VT 125	125
VT 150	150
VT 200	200
VT 250	250
VT 350	350
VT 500	500
VT 750	750

TYPE	Max.Load (Kg.)
VT-67 HD	67
VT-95 HD	95
VT-123 HD	123
VT-173 HD	173
VT-223 HD	223
VT-335 HD	335
VT-446 HD	446

AKUSTIK + ^{by getzner} **sylomer**[®]



Natural frequency: 3 - 11 Hz

TYPE	Max.Load (Kg.)
Akustik 4 A-45	30
Akustik 4 High A-45	30
Akustik 4 B-60	60
Akustik 4 High B-60	60
Gran Akustik 2 A-45	100
Gran Akustik 2 B-60	150
Springtec ST- 5 Type 2	5
Springtec ST-10 Type 2	10
Springtec ST-20 Type 2	20
Springtec ST-30 Type 2	30
Springtec ST-60 Type 2	60

ANTISEISMIC SPRING MOUNTS

These spring mounts incorporate an ANTISEISMIC device to protect the spring from earthquakes. They are also designed to provide a high reliability for the isolation of low frequency vibrations.

In addition to their resistance, these pieces offer other advantages:

- Transport safety: Vibrabsorber seismic brackets feature a locking device, so that the brackets are locked during the transport of the machinery.

- Noise isolation structure: Under these antiseismic mounts it is installed a Sylomer® microcellular polyurethane pad that insulates the mid-high frequencies that are transmitted by the spring.



AMC ANTISEISMIC MINI

Natural frequency: 3,5-5 Hz



AMC CODE RUBBER	AMC CODE SYLOMER®	MOD. (N°Springs)	SPRING COLOR	MAX.LOAD (kg.)	DEFLECTION (mm)
21271	21261	1	BLACK	25	20
21272	21262	1	BLUE	50	20
21273	21263	1	GREY	75	20
21274	21264	1	BEIGE	100	20
21275	21265	1	WHITE	125	20
21276	21266	1	BLACK	150	20
21277	21267	1	RED	250	20

1 AMC ANTISEISMIC

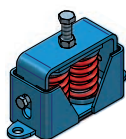
Natural frequency: 3,5-5 Hz



AMC CODE RUBBER	AMC CODE SYLOMER®	MOD. (N°Springs)	SPRING COLOR	MAX.LOAD (kg.)	DEFLECTION (mm)
20409	20413	1	PURPLE	305	22
20381	20377	1	GREEN	405	22
20382	20378	1	GREY	540	22
20383	20379	1	WHITE	612	22
20384	20380	1	RED	803	22

2 AMC ANTISEISMIC

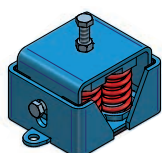
Natural frequency: 3,5-5 Hz



AMC CODE RUBBER	AMC CODE SYLOMER®	MOD. (N°Springs)	SPRING COLOR	MAX.LOAD (kg.)	DEFLECTION (mm)
20494	20480	2	PURPLE	610	22
20496	20487	2	GREEN	815	22
20497	20488	2	GREY	1080	22
20498	20489	2	WHITE	1225	22
20500	20490	2	RED	1610	22

4 AMC ANTISEISMIC

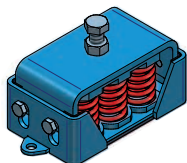
Natural frequency: 3,5-5 Hz



AMC CODE RUBBER	AMC CODE SYLOMER®	MOD. (N°Springs)	SPRING COLOR	MAX.LOAD (kg.)	DEFLECTION (mm)
20700	20686	4	PURPLE	1220	22
20696	20687	4	GREEN	1620	22
20697	20688	4	GREY	2160	22
20698	20689	4	WHITE	2448	22
20699	20690	4	RED	3112	22

6 AMC ANTISEISMIC

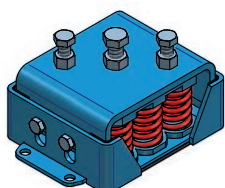
Natural frequency: 3,5-5 Hz



AMC CODE RUBBER	AMC CODE SYLOMER®	MOD. (N°Springs)	SPRING COLOR	MAX.LOAD (kg.)	DEFLECTION (mm)
20761	20766	6	PURPLE	1830	22
20762	20767	6	GREEN	2430	22
20763	20768	6	GREY	3240	22
20764	20769	6	WHITE	3670	22
20765	20770	6	RED	4820	22

9 AMC ANTISEISMIC

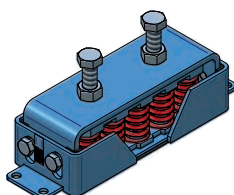
Natural frequency: 3,5-5 Hz



AMC CODE RUBBER	AMC CODE SYLOMER®	MOD. (N°Springs)	SPRING COLOR	MAX.LOAD (kg.)	DEFLECTION (mm)
20961	20992	9	PURPLE	2745	22
20962	20993	9	GREEN	3645	22
20963	20994	9	GREY	4860	22
20964	20995	9	WHITE	5508	22
20965	20996	9	RED	7227	22

10 AMC ANTISEISMIC

Natural frequency: 3,5-5 Hz



AMC CODE RUBBER	AMC CODE SYLOMER®	MOD. (N°Springs)	SPRING COLOR	MAX.LOAD (kg.)	DEFLECTION (mm)
20894	20852	10	PURPLE	3050	22
20895	20853	10	GREEN	4050	22
20896	20854	10	GREY	5400	22
20897	20855	10	WHITE	6120	22
20898	20856	10	RED	8030	22

V-SR ANTI-SEISMIC SUPPORTS

3-5 Hz

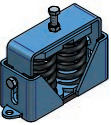


V-SR ANTISEISMIC + SYLOMER®



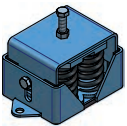
Type	Spring color	Load (kg.)	Code	Weight (kg.)
V-SR-650 Anti seismic + Sylomer®	BLACK	650	20502	6,5
V-SR-800 Anti seismic + Sylomer®	BLACK	800	20503	6,5
V-SR-1000 Anti seismic + Sylomer®	BLACK	1000	20504	6,5
V-SR-1200 Anti seismic + Sylomer®	BLACK	1200	20505	6,5

2V-SR ANTISEISMIC + SYLOMER®



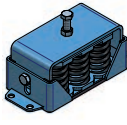
Type	Spring color	Load (kg.)	Code	Weight (kg.)
2V-SR-1300 Anti seismic + Sylomer®	BLACK	1300	20506	12,01
2V-SR-1600 Anti seismic + Sylomer®	BLACK	1600	20507	12,01
2V-SR-2000 Anti seismic + Sylomer®	BLACK	2000	20508	12,01
2V-SR-2400 Anti seismic + Sylomer®	BLACK	2400	20509	12,01

4V-SR ANTISEISMIC + SYLOMER®



Type	Spring color	Load (kg.)	Code	Weight (kg.)
4V-SR-2600 Anti seismic + Sylomer®	BLACK	2600	21141	23,766
4V-SR-3200 Anti seismic + Sylomer®	BLACK	3200	21142	23,766
4V-SR-4000 Anti seismic + Sylomer®	BLACK	4000	21143	23,766
4V-SR-4800 Anti seismic + Sylomer®	BLACK	4800	21144	23,766

6V-SR ANTISEISMIC + SYLOMER®



Type	Spring color	Load (kg.)	Code	Weight (kg.)
6V-SR-3900 Anti seismic + Sylomer®	BLACK	3900	20877	34,831
6V-SR-4800 Anti seismic + Sylomer®	BLACK	4800	20878	34,831
6V-SR-6000 Anti seismic + Sylomer®	BLACK	6000	20879	34,831
6V-SR-7200 Anti seismic + Sylomer®	BLACK	7200	20880	34,831

9V-SR ANTISEISMIC + SYLOMER®



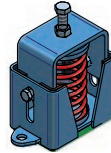
Type	Spring color	Load (kg.)	Code	Weight (kg.)
9V-SR-5850 Anti seismic + Sylomer®	BLACK	5850	20952	51,124
9V-SR-7200 Anti seismic + Sylomer®	BLACK	7200	20953	51,124
9V-SR-9000 Anti seismic + Sylomer®	BLACK	9000	20954	51,124
9V-SR-10800 Anti seismic + Sylomer®	BLACK	10800	20955	51,124

V-SH ANTI-SEISMIC SUPPORTS

2-5 Hz

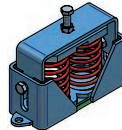


1V-SH ANTISEISMIC + SYLOMER®



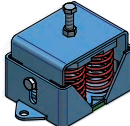
Type	Spring color	Load (kg.)	Code	Weight (kg.)
1V-SH-67 Anti seismic + Sylomer®	BLUE	67	20653	5,554
1V-SH-95 Anti seismic + Sylomer®	WHITE	95	20654	5,554
1V-SH-123 Anti seismic + Sylomer®	BLACK	123	20655	5,554
1V-SH-173 Anti seismic + Sylomer®	BEIGE	173	20656	5,554
1V-SH-223 Anti seismic + Sylomer®	RED	223	20657	5,554
1V-SH-335 Anti seismic + Sylomer®	GREY	335	20658	5,554
1V-SH-446 Anti seismic + Sylomer®	GREEN	446	20659	5,554

2V-SH ANTISEISMIC + SYLOMER®



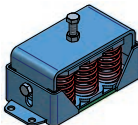
Type	Spring color	Load (kg.)	Code	Weight (kg.)
2V-SH-134 Anti seismic + Sylomer®	BLUE	134	20587	10,561
2V-SH-190 Anti seismic + Sylomer®	WHITE	190	20588	10,561
2V-SH-246 Anti seismic + Sylomer®	BLACK	246	20589	10,561
2V-SH-346 Anti seismic + Sylomer®	BEIGE	346	20590	10,561
2V-SH-446 Anti seismic + Sylomer®	RED	446	20591	10,561
2V-SH-670 Anti seismic + Sylomer®	GREY	670	20592	10,561
2V-SH-892 Anti seismic + Sylomer®	GREEN	892	20593	10,561

4V-SH ANTISEISMIC + SYLOMER®



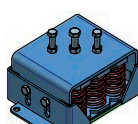
Type	Spring color	Load (kg.)	Code	Weight (kg.)
4V-SH-268 Anti seismic + Sylomer®	BLUE	268	20752	20,883
4V-SH-380 Anti seismic + Sylomer®	WHITE	380	20753	20,883
4V-SH-492 Anti seismic + Sylomer®	BLACK	492	20754	20,883
4V-SH-692 Anti seismic + Sylomer®	BEIGE	692	20755	20,883
4V-SH-892 Anti seismic + Sylomer®	RED	892	20756	20,883
4V-SH-1340 Anti seismic + Sylomer®	GREY	1340	20757	20,883
4V-SH-1784 Anti seismic + Sylomer®	GREEN	1784	20758	20,883

6V-SH ANTISEISMIC + SYLOMER®



Type	Spring color	Load (kg.)	Code	Weight (kg.)
6V-SH-402 Anti seismic + Sylomer®	BLUE	402	20861	30,579
6V-SH-570 Anti seismic + Sylomer®	WHITE	570	20862	30,579
6V-SH-738 Anti seismic + Sylomer®	BLACK	738	20863	30,579
6V-SH-1038 Anti seismic + Sylomer®	BEIGE	1038	20864	30,579
6V-SH-1338 Anti seismic + Sylomer®	RED	1338	20865	30,579
6V-SH-2010 Anti seismic + Sylomer®	GREY	2010	20866	30,579
6V-SH-2676 Anti seismic + Sylomer®	GREEN	2676	20867	30,579

9V-SH ANTISEISMIC + SYLOMER®



Type	Spring color	Load (kg.)	Code	Weight (kg.)
9V-SH-603 Anti seismic + Sylomer®	BLUE	603	20887	51,124
9V-SH-855 Anti seismic + Sylomer®	WHITE	855	20888	51,124
9V-SH-1107 Anti seismic + Sylomer®	BLACK	1107	20889	51,124
9V-SH-1557 Anti seismic + Sylomer®	BEIGE	1557	20890	51,124
9V-SH-2007 Anti seismic + Sylomer®	RED	2007	20891	51,124
9V-SH-3015 Anti seismic + Sylomer®	GREY	3015	20892	51,124
9V-SH-4014 Anti seismic + Sylomer®	GREEN	4014	20893	51,124

LEVELLING ANTIVIBRATION MOUNTS SOLUTIONS

TSR + **sylomer**[®] by getzner

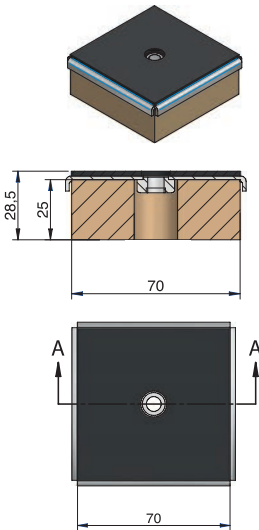
These mounts add up the good characteristic of the SYLOMER material to the typical levelling feet. They offer a high isolation capacity with a small static deformation. There are 6 different elements for a wide range of loads.



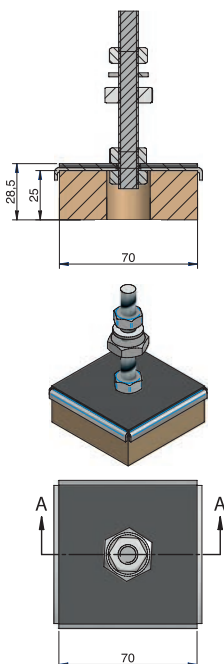
TSR + SYLOMER[®]
DISPLAY



TSR without levelling KIT



TSR with levelling KIT



Tipo	Flecha mm	CARGA kg MIN	CARGA kg MAX	FREC. Hz. Carga MIN	FREC. Hz. Carga MAX	K Dyn kN/mm	E Modulus N/mm2	M	Peso (kg)	Código
TSR 55 + KIT NIV	1,6	10	25	23,8	11	0,16	0,87	M8	0,2	157101
								M10	0,253	157107
								M12	0,314	157113
TSR 110 + KIT NIV	2,1	25	45	17,4	11,1	0,23	1,25	M8	0,21	157102
								M10	0,258	157108
TSR 220 + KIT NIV	2,1	45	75	16	11,1	0,38	2,03	M8	0,225	157103
								M10	0,273	157109
TSR 450 + KIT NIV	2,7	75	150	15,5	10,4	0,67	3,58	M8	0,24	157104
								M10	0,287	157110
TSR 850 + KIT NIV	2,9	150	250	14,2	11,1	1,28	6,9	M8	0,26	157105
								M10	0,31	157111
TSR 1200 + KIT NIV	2,9	250	300	11	10	1,24	6,7	M8	0,275	157106
								M10	0,3	157112
TSR 55	1,6	10	25	23,8	11	0,16	0,87	M8	0,163	157001
								M10	0,163	157008
TSR 110	2,1	25	45	17,4	11,1	0,23	1,25	M8	0,173	157002
								M10	0,173	157009
TSR 220	2,1	45	75	16	11,1	0,38	2,03	M8	0,188	157003
								M10	0,188	157010
TSR 450	2,7	75	150	15,5	10,4	0,67	3,58	M8	0,203	157004
								M10	0,203	157011
TSR 850	2,9	150	250	14,2	11,1	1,28	6,9	M8	0,223	157005
								M10	0,223	157012
TSR 1200	2,9	250	300	11	10	1,24	6,7	M8	0,238	157006
								M10	0,238	157013
								M12	0,238	157019

TSR + ^{by getzner}sylomer® 40x40

Type	Load (kg)	DEFLECTION mm	Nat Freq. Hz	M	Code
TSR 55 40X40	7.5	1.6	13.6	M-8x20	157035
				M-10x25	157066
TSR 110 40X40	15	2	11.7	M-8x20	157036
				M-10x25	157067
TSR 220 40X40	25	2,1	11.5	M-8x20	157037
				M-10x25	157070



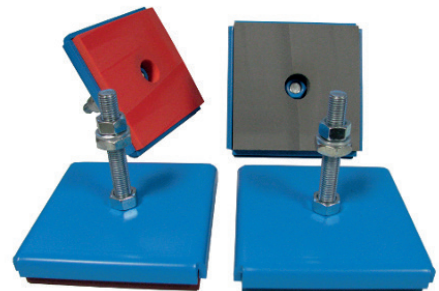
TSR + ^{by getzner}sylomer® 100x100

Type	MIN. LOAD (Kg)	MAX. LOAD (Kg)	FREQ. Hz	FREQ. Hz	Weight (Kg)	Code
TSR 100x100 SR55 M16 + Lev. Kit M16x130	20	47	24,5	12,9	1,1	157071
TSR 100x100 SR110 M16 + Lev. Kit M16x130	47	96	18,5	11	1,16	157072
TSR 100x100 SR220 M16 + Lev. Kit M16x130	96	170	16,1	10,6	1,24	157073
TSR 100x100 SR450 M16 + Lev. Kit M16x130	170	342	15,1	10,1	1,34	157074
TSR 100x100 SR850 M16 + Lev. Kit M16x130	342	561	14,5	11,3	1,39	157075
TSR 100x100 SR1200 M16 + Lev. Kit M16x130	561	685	11,5	10,3	1,42	157007
TSR 100x100 SR55 M16	20	47	24,5	12,9	1,1	157083
TSR 100x100 SR110 M16	47	96	18,5	11	1,16	157084
TSR 100x100 SR220 M16	96	170	16,1	10,6	1,24	157085
TSR 100x100 SR450 M16	170	342	15,1	10,1	1,34	157086
TSR 100x100 SR850 M16	342	561	14,5	11,3	1,39	157087
TSR 100x100 SR1200 M16	561	685	11,5	10,3	1,42	157088



TSR + ^{by getzner}sylomer® 150x150

Type	MIN. LOAD (Kg)	MAX. LOAD (Kg)	FREQ. Hz. MIN Load	FREQ. Hz. MAX Load	Code
TSR 150x150 SR_110 M16 + LEV. KIT M16x130	100	240	19,8	10,6	157120
TSR 150x150 SR_220 M16 + LEV. KIT M16x130	240	450	16,1	10,3	157121
TSR 150x150 SR_450 M16 + LEV. KIT M16x130	450	900	14,7	9,9	157122
TSR 150x150 SR_850 M16 + LEV. KIT M16x130	900	1500	14,5	11,3	157123
TSR 150x150 SR_1200 M16 + LEV. KIT M16x130	1500	2000	14,5	12,4	157124
TSR 150x150 SR_110 M16	100	240	19,8	10,6	157125
TSR 150x150 SR_220 M16	240	450	16,1	10,3	157126
TSR 150x150 SR_450 M16	450	900	14,7	9,9	157127
TSR 150x150 SR_850 M16	900	1500	14,5	11,3	157128
TSR 150x150 SR_1200 M16	1500	2000	14,5	12,4	157129



SV & LOW SV

Type	MIN. LOAD (Kg)	MAX. LOAD (Kg)
SV 000	40	80
SV 00 / LOW SV 00B	60	120
SV 0 / LOW SV 0B	90	160
SV 1 / LOW SV 1B	130	350
SV 2 / LOW SV 2B	270	600
SV 3 / LOW SV 3B	450	900
SV 4 / LOW SV 4B	700	1200
SV 5 / LOW SV 5B	1100	1750
SV 6	1500	2500
SV 7	2100	3750



LEVELLING ANTIVIBRATION MOUNTS SOLUTIONS



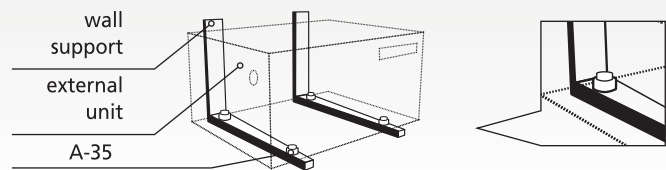
TRAPEZOIDAL SUPPORT KIT

TYPE	Max. Load (Kg.)	Code
A-35	50	649009
A-45	85	649016
S-40	45	649017
S-60	150	649043

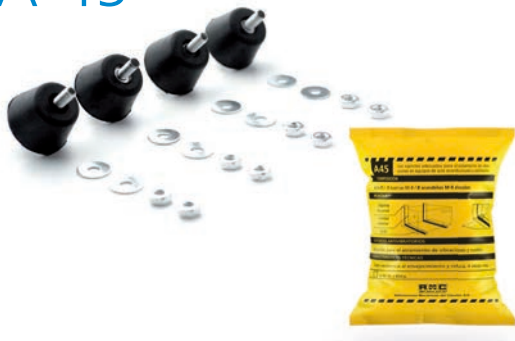
A35



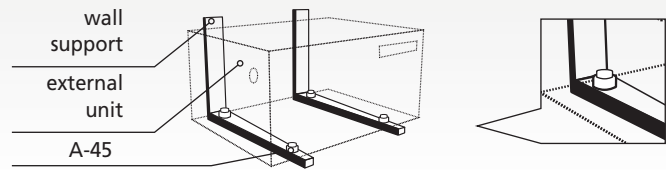
Assembly



A-45



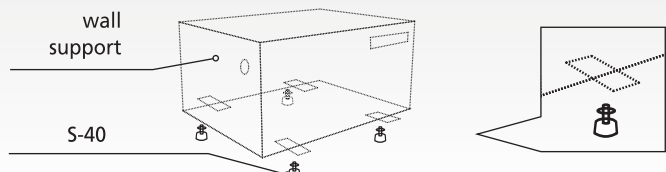
Assembly



S-40



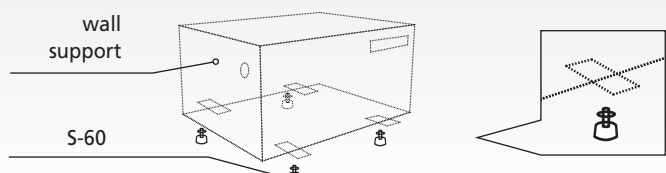
Assembly



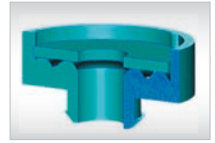
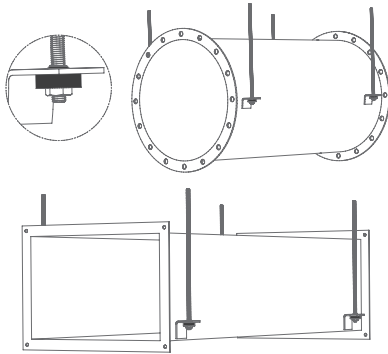
S-60



Assembly



HVAC KITS FOR AIR CONDITIONING UNITS, VENTILATION BOXES AND DUCTS



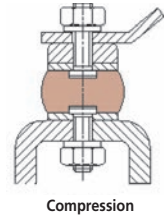
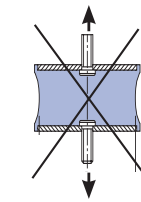
SIMPLE MOUNTS FOR AIR CONDITIONING INTERNAL COMPONENTS MECANOCAUCHO® BOBBINS



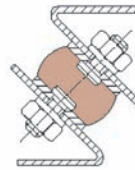
The AMC Mecanocaucho® bobbins are particularly suitable for installation on small motor-pumps, motor-ventilators, driers, sieves, compactors, washing machines, electrical motors, on-board control panels, measuring apparatuses, control cabinets, microphones, fluorescent tubes, etc.

RECOMMENDATIONS FOR THE CYLINDRICAL MOUNTS

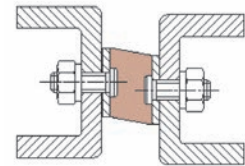
The cylindrical mounts should never work at traction. They should be used on a compression basis. To obtain greater deflection, use them at shear or shear /compression, although the maximum loads indicated in our catalogue for shear use should never be exceeded. This applies to our bobbins, diabolos, trapezoidal or annular mounts.



Compression



Compression-shear

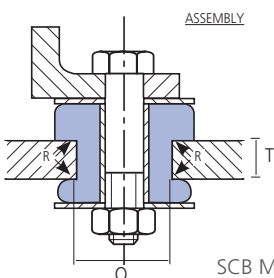


Shear

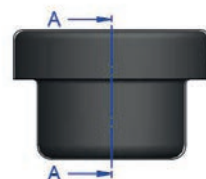
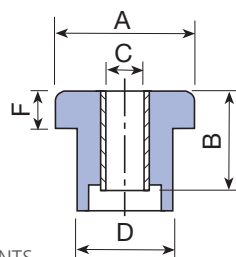
SCB & SCBR



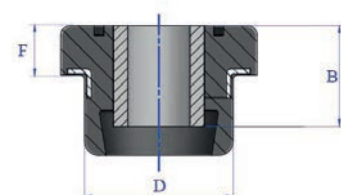
TYPE	Max. Load (Kg.)
SCB 25	50
SCB 35	25
SCB 38	50
SCB 40	75
SCB 42	75
SCB 45	100
SCB 50	200
SCB 60	250
SCB 65	250
SCB 95	1000



SCB MOUNTS



SCBR MOUNTS



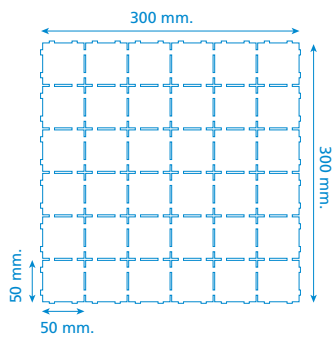
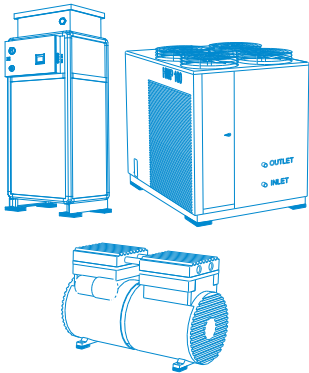
sylomer[®] PAD by getzner

APPLICATIONS

The pieces are made of Sylomer, which is a very effective material to avoid the transmission of the noise and vibrations thanks to its mechanical and elastic properties. The microcellular structure provides optimal isolation values with little deflection.

There are three different Sylomer densities available to ideally suit different required load ranges.

The possibility to cut easily the required pieces according to the load by support makes this product very interesting for all kind of machinery thanks to its adaptability.

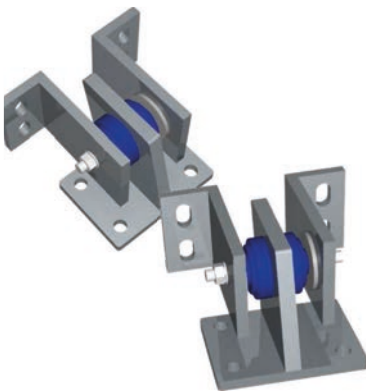


Type	Max. Load kg/piece	Weight (kg.)	THICKNESS (mm.)	Nat. Freq. Hz	Code
SYLOMER PAD 110	20	0,404	12	20,1	707601
SYLOMER PAD 220	40	0,63	12	17,4	707603
		0,97	25	11,4	707604
SYLOMER PAD 450	80	0,92	12	16,1	707605
		1,345	25	10,6	707606

AMC SNUBBERS FOR SEISMIC APPLICATIONS

These type of mounts are designed for use in locations subject to earthquakes or other external forces which could displace equipments. These models are intended to limit lateral and vertical machine movements.

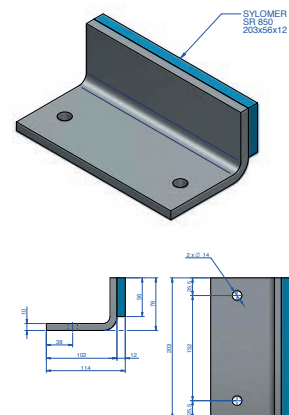
AMC SNUBBER + CB



AMC SNUBBER + sylomer[®]



AMC SNUBBER L+ sylomer[®]



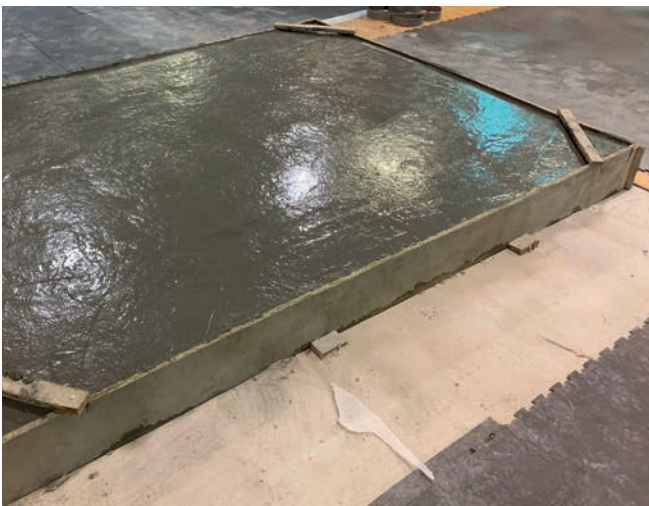
FLOOR BLOCKS

APPLICATIONS

Great improvement for noise insulation, especially at low frequencies. Very low creeping (little permanent deformation). Extremely competitive system, thanks to its low cost and high performance. Excellent behavior for engine rooms. Allows any type of installation or conduction between mounts. Material with extraordinary ageing characteristics.



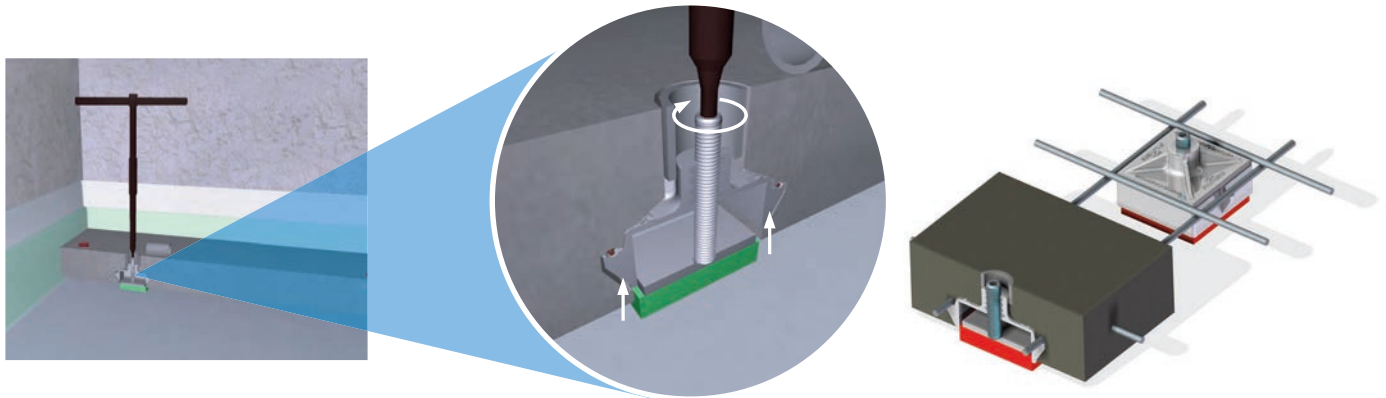
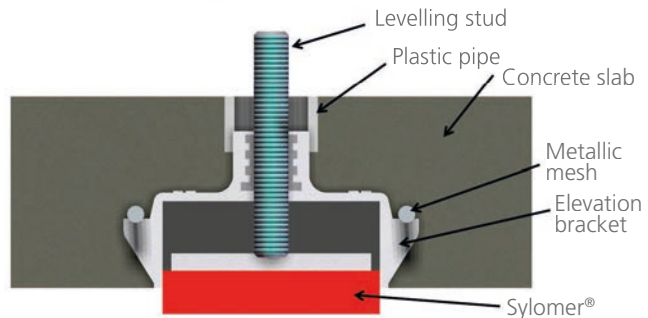
Type	FORMAT	Max. Load (Kg)	Code
AFB 30 Floor Block	50x50x50	30	707861
AFB 60 Floor Block	50x50x50	60	707862
AFB 110 Floor Block	50x50x50	100	707863
AFB 160 Floor Block	50x50x50	160	707884



FLOOR MOUNTS FZH + **sylomer**[®] by getzner

The goal of the system is to avoid the structure borne noise installing elastical mounts that are embedded in the concrete floating floor. The process of elevation is done once the concrete is dry. The AMC-MECANOCAUCHO[®] type FZH mounts incorporate a polyurethane elastomer called Sylomer[®]. This material offers optimal elastic and mechanical properties for the application.

The AMC-MECANOCAUCHO[®] type FZH mounts can be manufactured in different densities of Sylomer to match the natural frequency needed on the application. The process of leveling is simple and effective. The maximum distance between mounts is 1.2m.



	Type	SUMMARY	LOAD Kg. MAX	FREQ. Hz. MAX Load	Weight (kg.)	Code
	FZH-33-25	Concrete embedded Jack up mounts, designed for the antivibration suspension of slabs.	140	11,3	1,12	176511
	FZH-33-37	Concrete embedded Jack up mounts, designed for the antivibration suspension of slabs.	140	8,9	1,64	176512
	FZH-39-25	Concrete embedded Jack up mounts, designed for the antivibration suspension of slabs.	240	11,2	1,24	176513
	FZH-39-37	Concrete embedded Jack up mounts, designed for the antivibration suspension of slabs.	240	8,6	1,82	176514
	FZH-45-25	Concrete embedded Jack up mounts, designed for the antivibration suspension of slabs.	490	10,5	1,42	176515
	FZH-45-37	Concrete embedded Jack up mounts, designed for the antivibration suspension of slabs.	490	8,2	1,94	176516
	FZH-51-25	Concrete embedded Jack up mounts, designed for the antivibration suspension of slabs.	800	11,9	1,53	176517
	FZH-51-37	Concrete embedded Jack up mounts, designed for the antivibration suspension of slabs.	800	9,1	2,11	176518
	FZH-57-25	Concrete embedded Jack up mounts, designed for the antivibration suspension of slabs.	965	11,7	1,61	176519
	FZH-57-37	Concrete embedded Jack up mounts, designed for the antivibration suspension of slabs.	965	8,4	2,29	176520

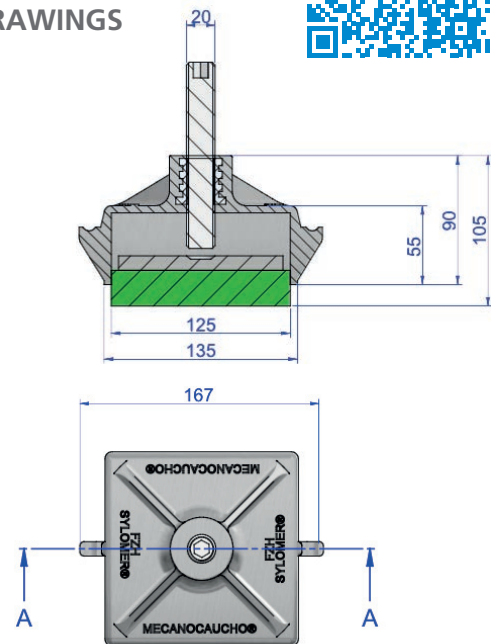
INSTALLATION VIDEO:



ADVANTAGES

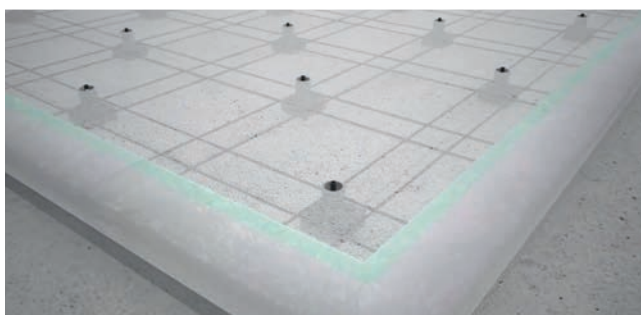
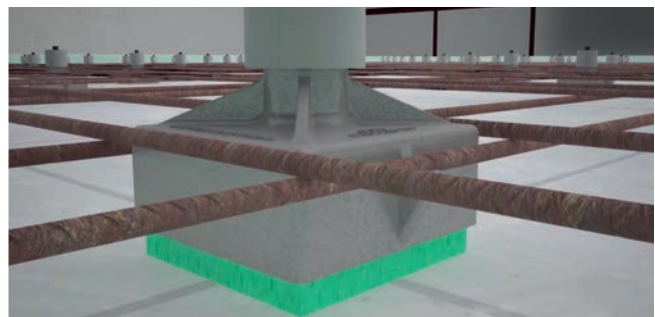
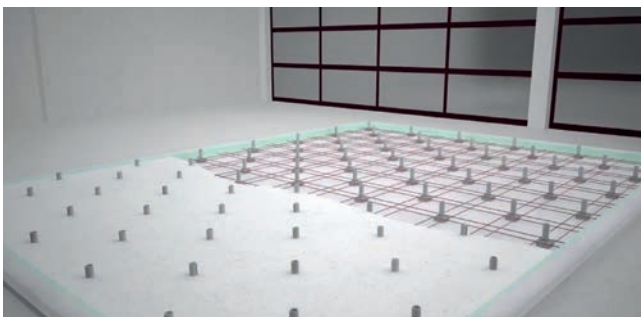
- **LOW-LEVEL**, optimum efficiency damped screeds without much height is achieved. Given that the available height is severely limited in many cases, the entire available height becomes concrete slab system and adding mass to lower the natural frequency getting.
- **High isolation** anti-vibration characteristics thanks to the Sylomer pads used in these mounts. Very low natural frequencies that provide optimum isolation are achieved.
- **Quick installation** without placing board or joints between boards.
- **Economy**, save assembly time, we do not need boards or pads.
- **Safety**, avoid the appearance of acoustic bridges, as when lifting the slab we are 100% sure that there has been no error in making the slab.
- **Easy and simple assembly**, it does not take a specialist to perform this ground.

DRAWINGS



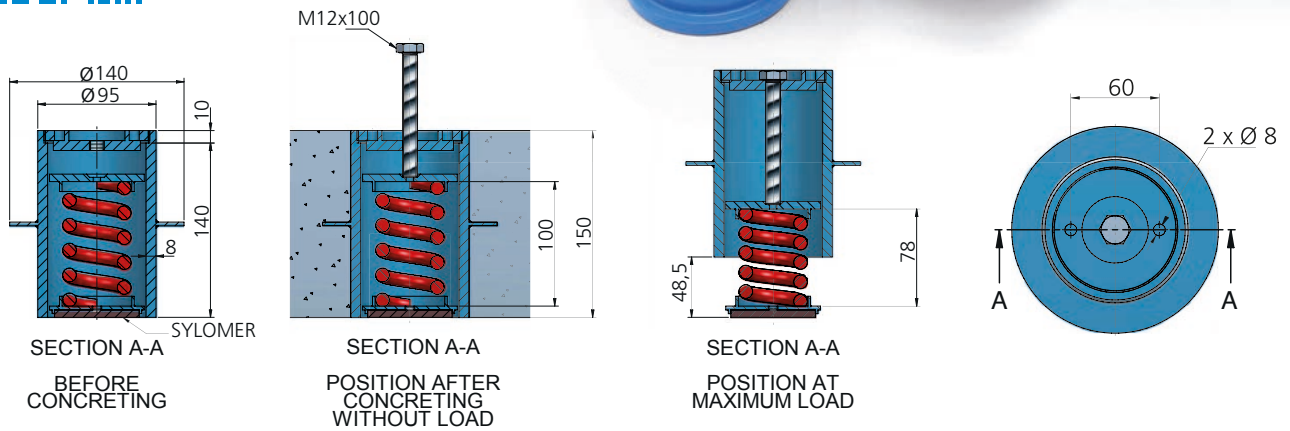
INSTALLATION STEPS

- Conditioning the premise and installation of the mounts.
- Installation of reinforced concrete.
- Levelling.
- Height adjustment.

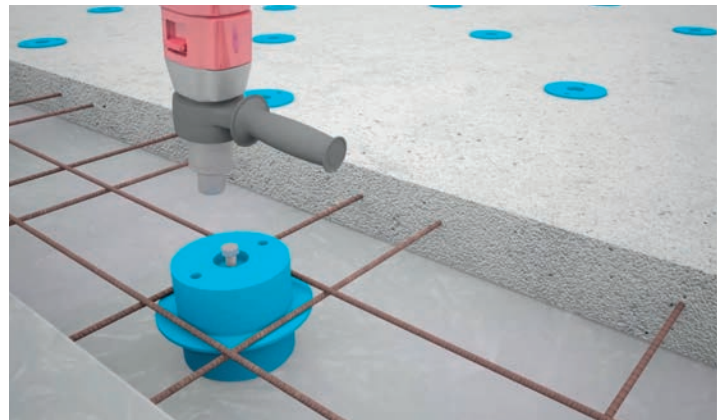
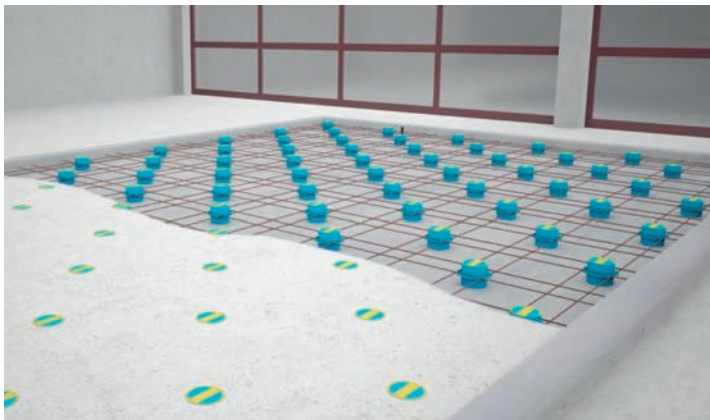


FLOOR MOUNTS FZHM SPRING + sylomer®

The goal of the system is to avoid the structure borne noise installing elastical mounts that are embedded in the concrete floating floor. The process of elevation is done once the concrete is dry.



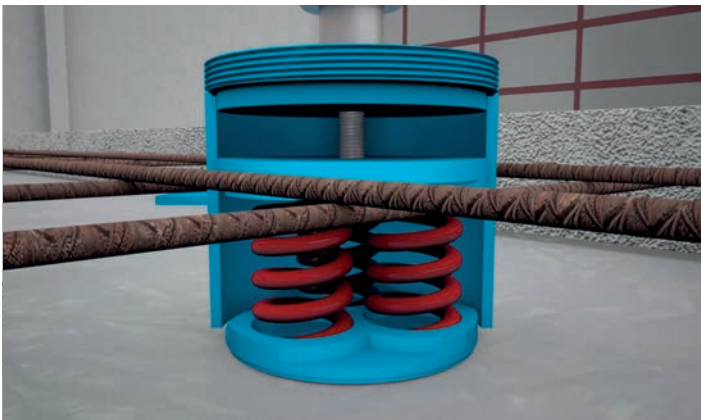
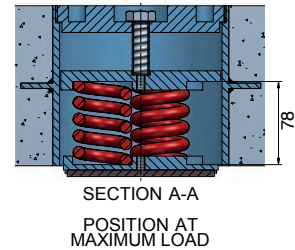
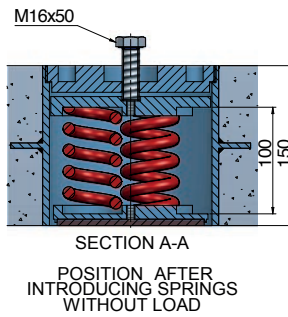
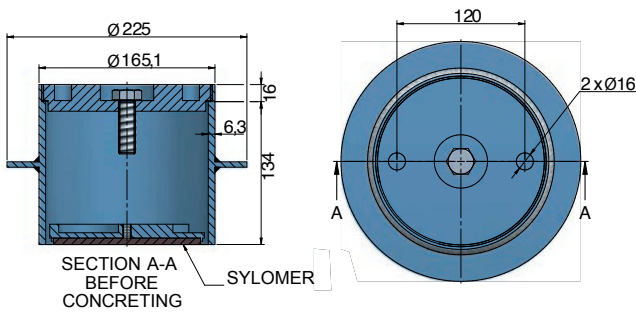
INSTALLATION STEPS FOR FZH SPRING AND FZHM



Type	Spring color	Max. Load (kg)	Spring	Code
FZHM + sylomer®	PURPLE	305	1 AMC 305	176015
	GREEN	405	1 AMC 405	176016
	GREY	540	1 AMC 540	176017
	WHITE	612	1 AMC 612	176018
	RED	803	1 AMC 803	176019

FLOOR MOUNTS FZH SPRING + **sylomer**^{by getzner}

The goal of the system is to avoid the structure borne noise installing elastical mounts that are embedded in the concrete floating floor. The process of elevation is done once the concrete is dry.



Type	Spring color	Max. Load (kg)	Spring	Code
FZH SPRINGS + SYLOMER	PURPLE	915	1 AMC 915	176004
	GREEN	1215	1 AMC 1215	176005
	GREY	1620	1 AMC 1620	176006
	WHITE	1836	1 AMC 1836	176007
	RED	2409	1 AMC 2409	176008

OTHER AMC CATALOGUES



ANTI-VIBRATION MOUNTINGS MECANOCAUCHO.COM

Rubber Metal suspensions.



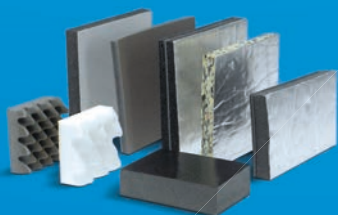
VIBRABSORBER + sylomer^{by getma}

Spring mounts catalogue.



AKUSTIK + AMC MECANOCAUCHO

AKUSTIK structure borne noise decoupling systems for architectural acoustics.



AKUSTIKABSORBER COMPOSITES

Akustikabsorber products are materials designed to reduce reverberation and increase the attenuation between chambers.



AKUSTIK + sylomer^{by getma}

When 2 dB at low frequencies make the difference.

www.akustik.com

DISCOVER OUR **NEW APPLICATIONS**: available at Android and iOS.

VIBRATION ISOLATOR PRO



Let your phone discover **THE MAIN DISTURBING FREQUENCIES** of your application. The integrated accelerometers of your phone are capable of making an FFT measurement where you will be able to see the main frequencies that you need to isolate.



ACOUSTIC HANGER PRO



Discover the app that helps you **FIND THE CORRECT ACOUSTIC HANGER** for your application. Let your phone provide you a full report of isolation, datasheets and installation video. **SIMPLE, EASY & FREE.**



Aplicaciones Mecánicas del Caucho S.A.

Industrialdea Parc 35 A. • E-20.159
ASTEASU (Gipuzkoa) Spain
Tel.: + 34 943 69 61 02 • Fax: + 34 943 69 62 19
e-mail: sales@amcsa.es / ventas@amcsa.es
www.akustik.com
www.mecanocaucho.com

